

# BODYGEOMETRY

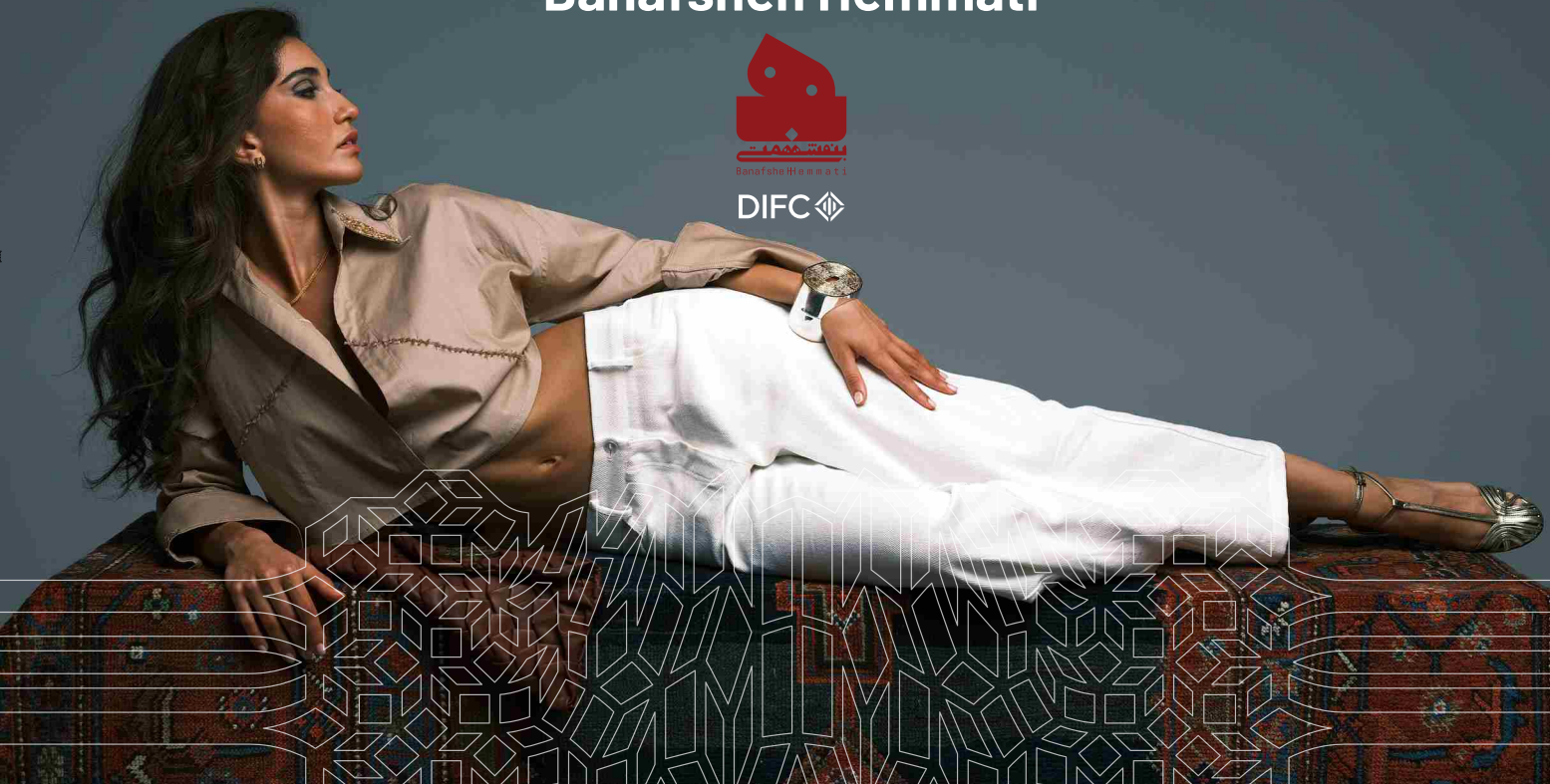
*A Dialogue Between* **Sculpture and Jewellery**

**Banafsheh Hemmati**



Banafsheh Hemmati

DIFC

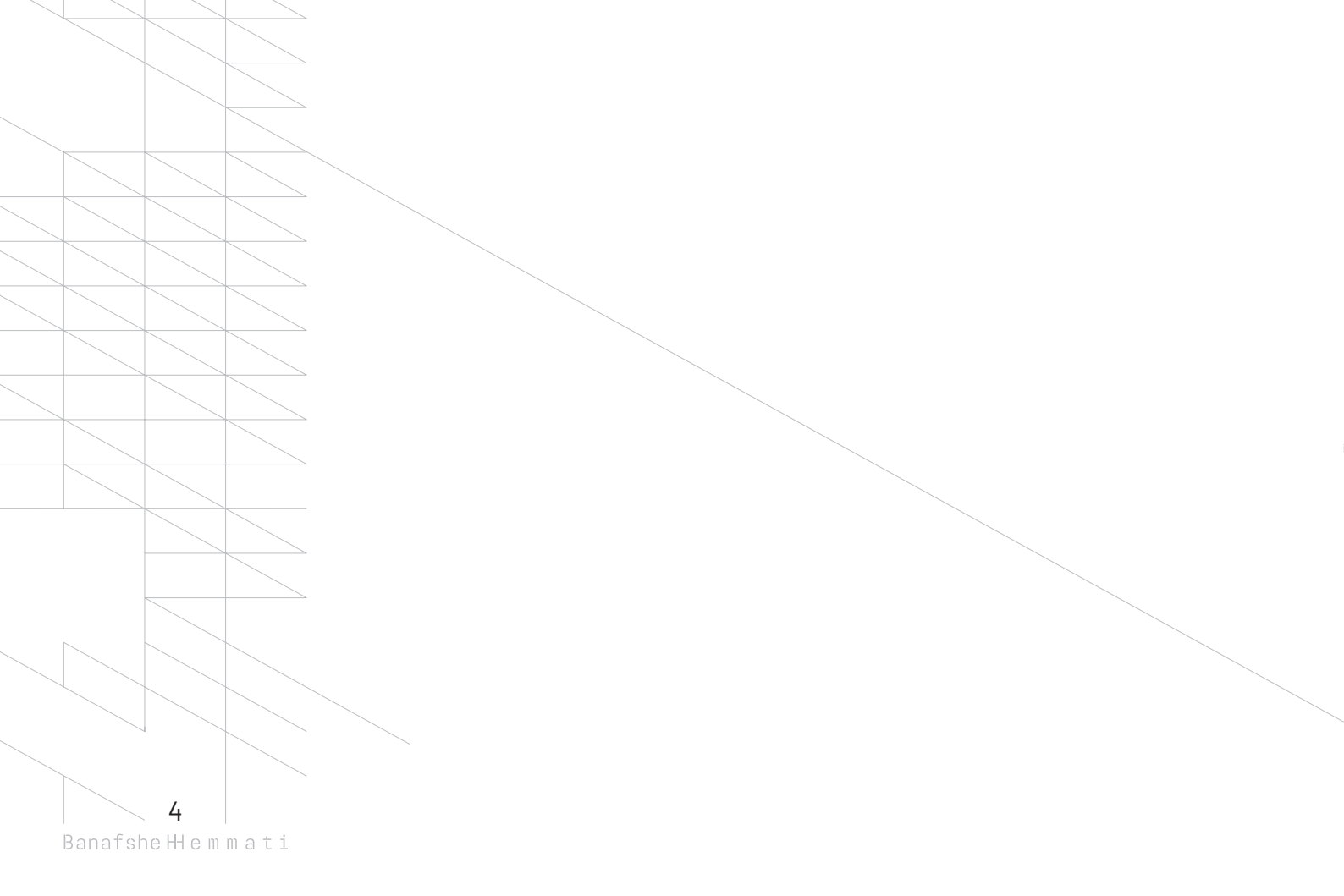






## ABOUT BANAFSHEH HEMMATI

Banafsheh Hemmati is an Iranian designer-artist whose work lies at the intersection of art, design, and philosophy. Her extensive body of work spans sculpture and artistic jewelry, and is deeply rooted in the interpretation of Islamic geometry in a contemporary context. Inspired by the motifs of Islamic architecture, Hemmati integrates geometric patterns into her creations while disrupting their rigid order to expand their visual and formal possibilities. She holds a master's degree in Industrial Design and a PhD in Philosophy of Art, and has exhibited globally. Hemmati's work has been shown in numerous exhibitions, including DIFC Sculpture Park (who acquired the work into their permanent collection), Venice Design Week and Baltimore Jewelry Week, and she was awarded the Florence International Art and Design Award in 2017. She is also a member of Klimt02, an international platform for contemporary art jewelry, and contributes as a writer to the Art Jewelry Forum (AJF) in the United States. In addition to her artistic practice, Hemmati is an educator and has served as a juror for prestigious design festivals. She has received numerous accolades, including the Florence International Art and Design Award in 2017. She is also a member of Klimt02, an international platform for contemporary art jewelry, and contributes as a writer to the Art Jewelry Forum (AJF) in the United States.



# BODY GEOMETRY

Body Geometry marks Banafsheh Hemmati's first solo exhibition in Dubai. Following her participation in Dubai Design Week and two editions of the DIFC Sculpture Park, she now presents a collection of jewelry and sculptures, where the two disciplines enter into a living dialogue with one another.

The exhibition explores the relationship between body, space, and geometry, positioned at the intersection of art, design, and philosophy. Body Geometry invites the viewer to experience the connection between the human body and geometric form in a new way.

All works in the collection are derived from the redefinition of three foundational forms of Islamic geometry. The aim is to unlock the formal and conceptual potentials of this geometry and reimagine it as a new language that can bring the East and West closer together. The exhibition reveals how a single geometric form can unfold into a diverse set of works.

In contrast to Islamic philosophy, which traditionally moves from multiplicity toward unity, Body Geometry takes the reverse path from unity to multiplicity in order to create a contemporary and multilayered space. Looking simultaneously to the past and the future, Body Geometry redefines Islamic geometry as a contemporary visual language that enables deeper connections between cultures.



A photograph of three models from the waist down, wearing dark blue or grey textured trousers and jackets with sequined pockets. The model on the left wears a wide, rectangular silver cuff with a geometric pattern. The middle model wears a wide, crescent-shaped silver cuff. The model on the right wears a wide, textured silver cuff. All three models have their hands resting on their thighs.

# Jewellery

Silver and custom made in gold



“

**Each piece is engraved with the artist's  
signature and edition number, and comes  
with a certificate of authenticity. ”**







Title:  
**Dome**

Unlimited

Gold ..... 8500\$

Silver.... 750\$



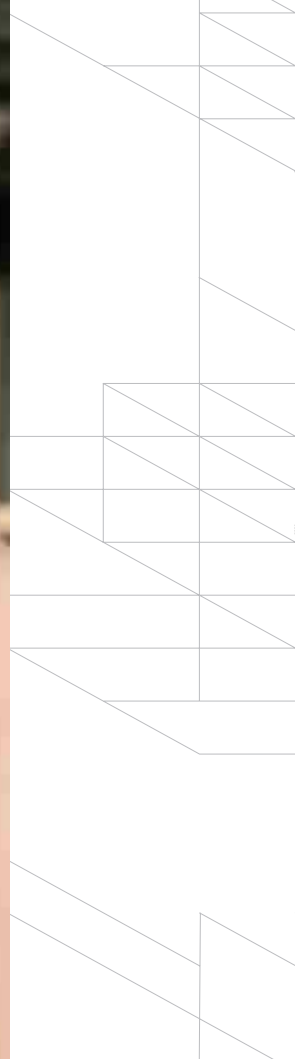


Title:  
**Octagon**

Edition: 5 total + 1AP

Silver.... **7000\$**







Title:

## Casecade

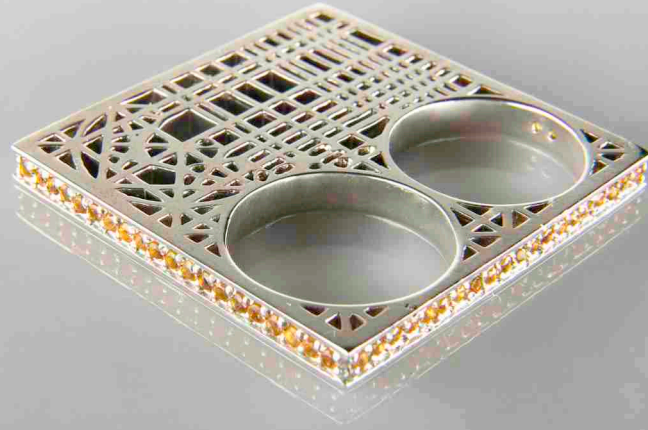
Edition: 7 total + 1AP

Gold ..... 6500\$

Silver.... 1200\$







Title:

## Lines

Edition: 14 total + 1AP

Gold ..... 6500\$

Silver..... 700\$

Silver + Sapphire.... 1700\$

Gold + Sapphire.... 8500\$





Title:

**Breath**

Edition: 10 total + 1 AP

Gold ..... 26000\$

Silver..... 2400\$







Title:

# Metamorphosis

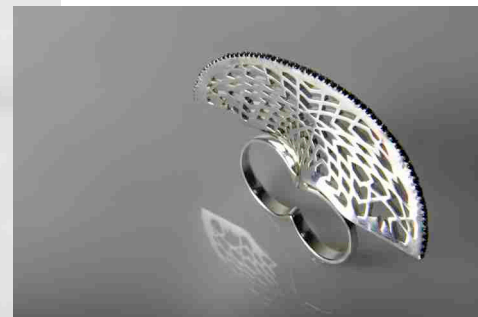
Edition: 8 total + 1 AP

Gold ..... 5900\$

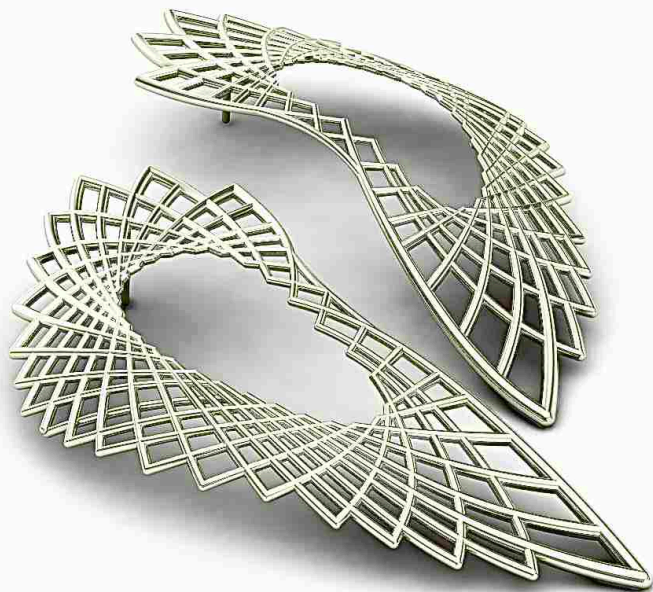
Silver..... 750\$

Silver + Sapphire.... 1500\$

Gold + Sapphire.... 6800\$







Title:

**Wing**

Edition: 10 total + 1AP

Gold ..... 7500\$

Silver....750\$





Title:

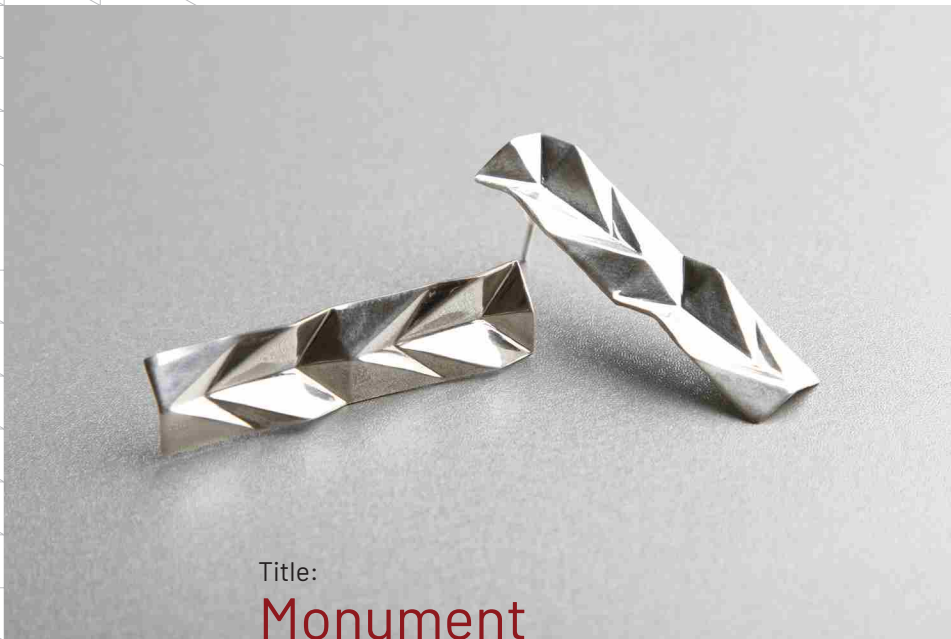
**Monument**

Edition: 5 Total + 1AP

Silver.... **6500\$**







Title:

# Monument

Unlimited

Gold ..... 3000\$

Silver.... 400\$





Title:

## Labyrinth

Edition: 5 total 1+AP

Gold Plated Silver .... 5800\$



28

Banafshe Hemmati



Title:

## Twist

Edition: 10 total + 1AP

Gold ..... 6500\$

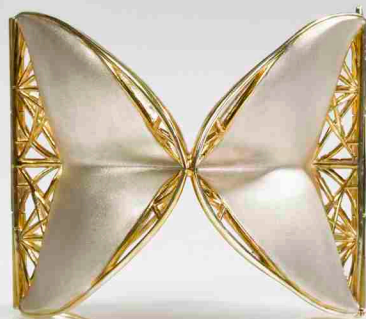
Silver.... 850\$











Title:

# Illusion

Edition: 5 total + 1AP

Gold Plated Silver .... 50,000\$

Silver.... 5800\$







Title:

**Illusion**

Edition: 8 total + 1AP

Gold .... **8500\$**

Silver.... **850\$**





Title:

**Axis**

Edition: 7 total + 1AP

Gold .... 29000\$

Silver.... 2800\$









Title:

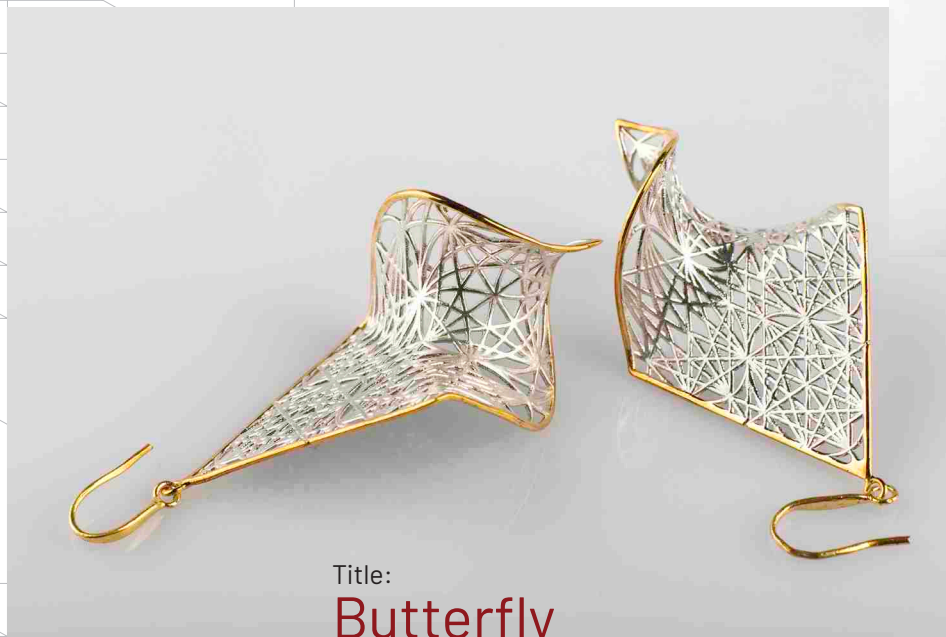
## Breath

Edition: 10 total + 1AP

Gold .... 6500\$

Silver.... 750\$





Title:

**Butterfly**

Unlimited

Gold .... 2700\$

Silver.... 650\$







Title:

**Trace**

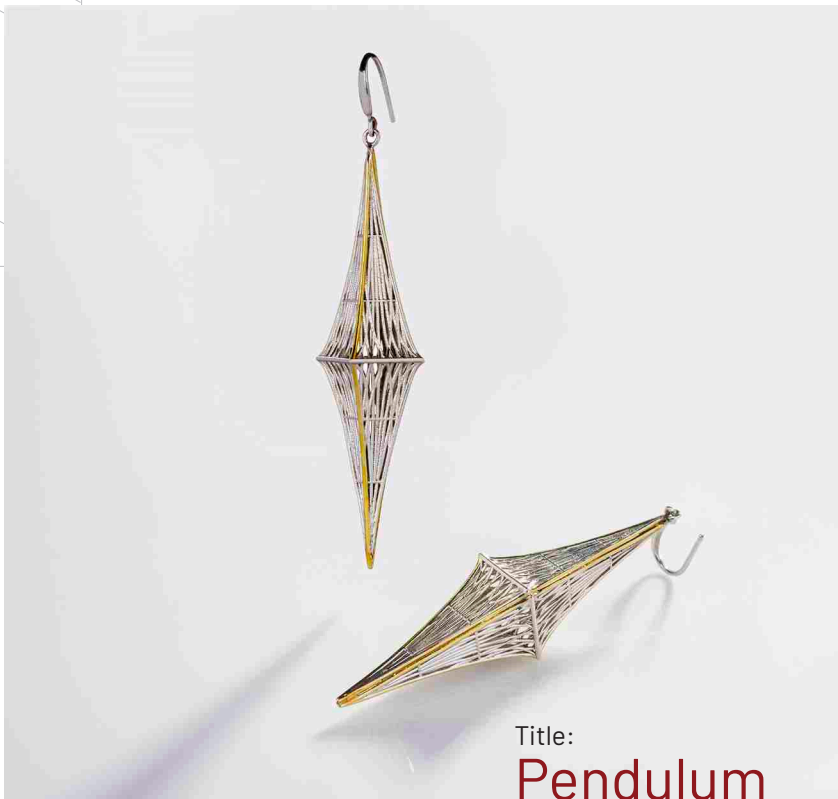
Edition: 10 total + 1Ap

Gold .... 6500\$

Silver.... 900\$







Title:

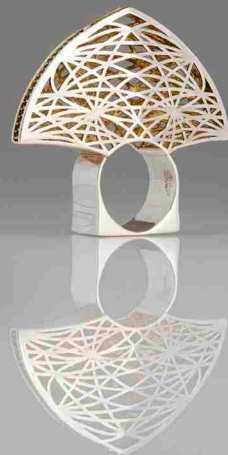
## Pendulum

Edition: 7 total

Gold .... 6500\$

Silver.... 1200\$





Title:  
**Vault**

Edition: 12 total + 1AP

Gold ..... 6700\$

Silver.... 800\$

Silver + Sapphire.... 1500\$

Gold + Sapphire.... 8200\$







Title:

# Butterfly

Unlimited

Gold .... 2100\$

Silver.... 350\$







Title:  
**Wing**

Edition: 10 total + 1AP

Gold .... 6500\$

Silver.... 900\$

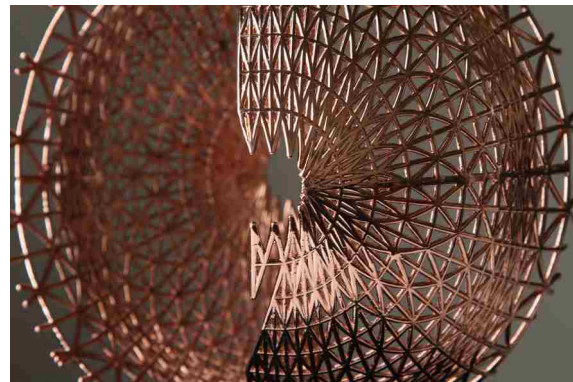


The background features a complex, abstract sculpture made of thin, dark, metallic rods. The rods are arranged in a dense, overlapping, and somewhat chaotic pattern, creating a web-like structure. The lighting is dramatic, with strong highlights and deep shadows, emphasizing the three-dimensional quality and the sharp edges of the rods. The overall color palette is dark, with the metallic sheen of the rods providing a subtle contrast.

# Sculptures





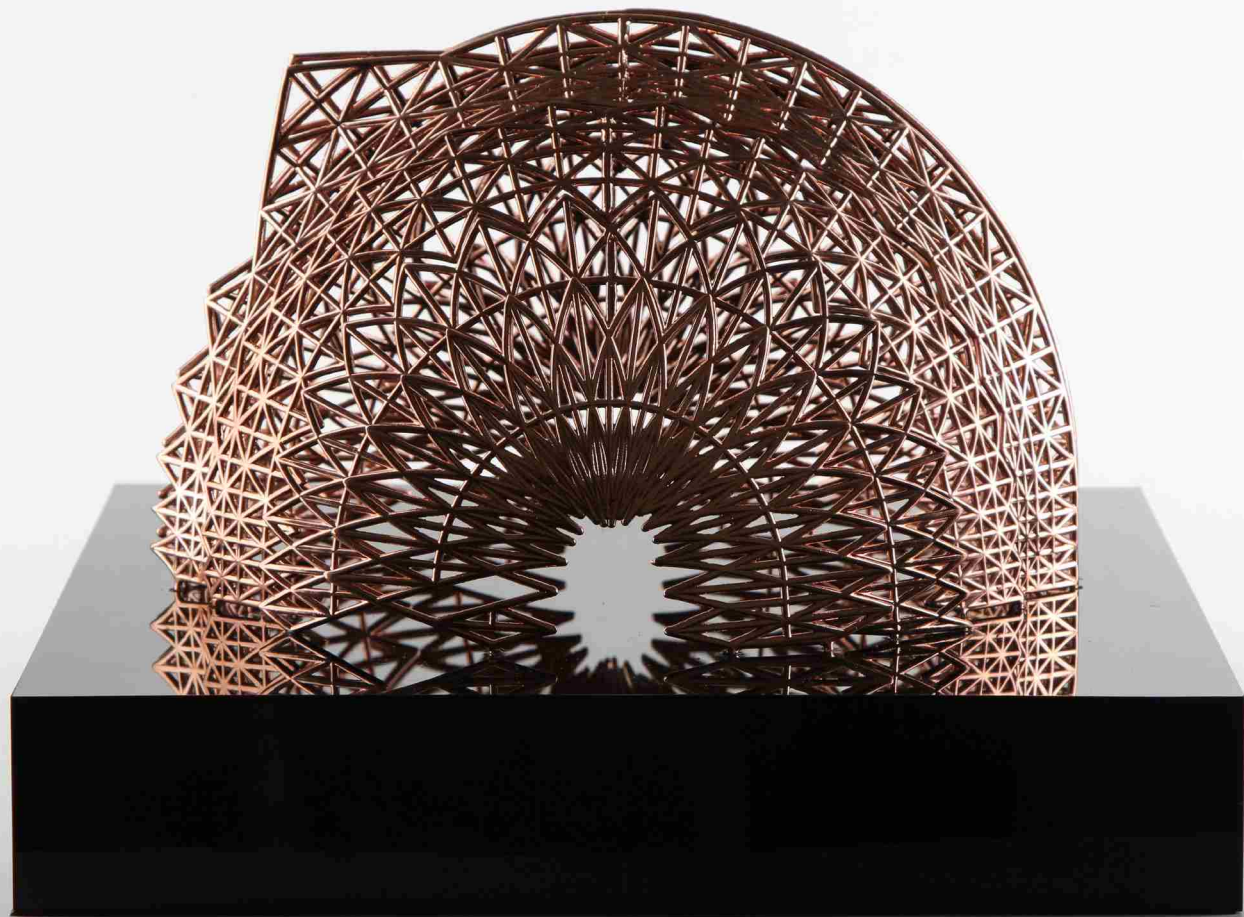


## Disrupted Sphere

3 Pieces

317×17×25 (H) cm, Bronze, Body Geometry Collection

Bronze .... 6800\$







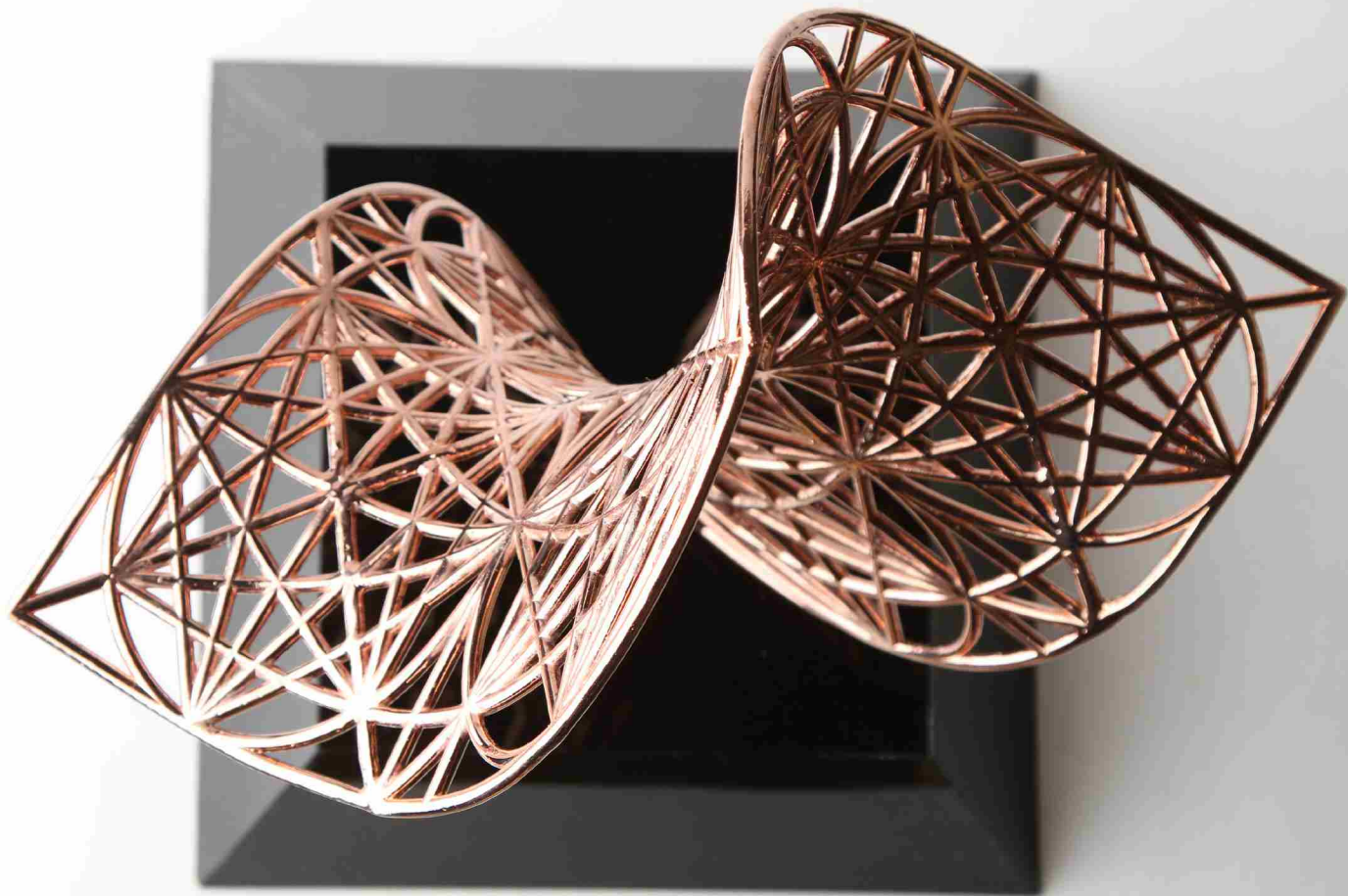
## Lumina

3 Pieces

28×28×19 (H) cm, Bronze, Body Geometry Collection

Bronze .... 7000\$







## Genesis

3 Pieces

23×23×32 (H) cm, Bronze, Body Geometry Collection

Bronze .... 7500\$







## Refraction

3 Pieces

175×175×48 cm, Body Geometry Collection

Recycled Steel .... 20.000\$



Banafshe Hemmati

[www.banafshehemmati.com](http://www.banafshehemmati.com)  
[hemmatibanafsheh@gmail.com](mailto:hemmatibanafsheh@gmail.com)



[banafsheh\\_hemmati](https://www.instagram.com/banafsheh_hemmati)  
[banafshehemmati.studio](https://www.instagram.com/banafshehemmati.studio)



+98 912 199 7684

© Banafsheh Hemmati Design Studio

Catalog Design: [peyvast.studio](http://peyvast.studio)